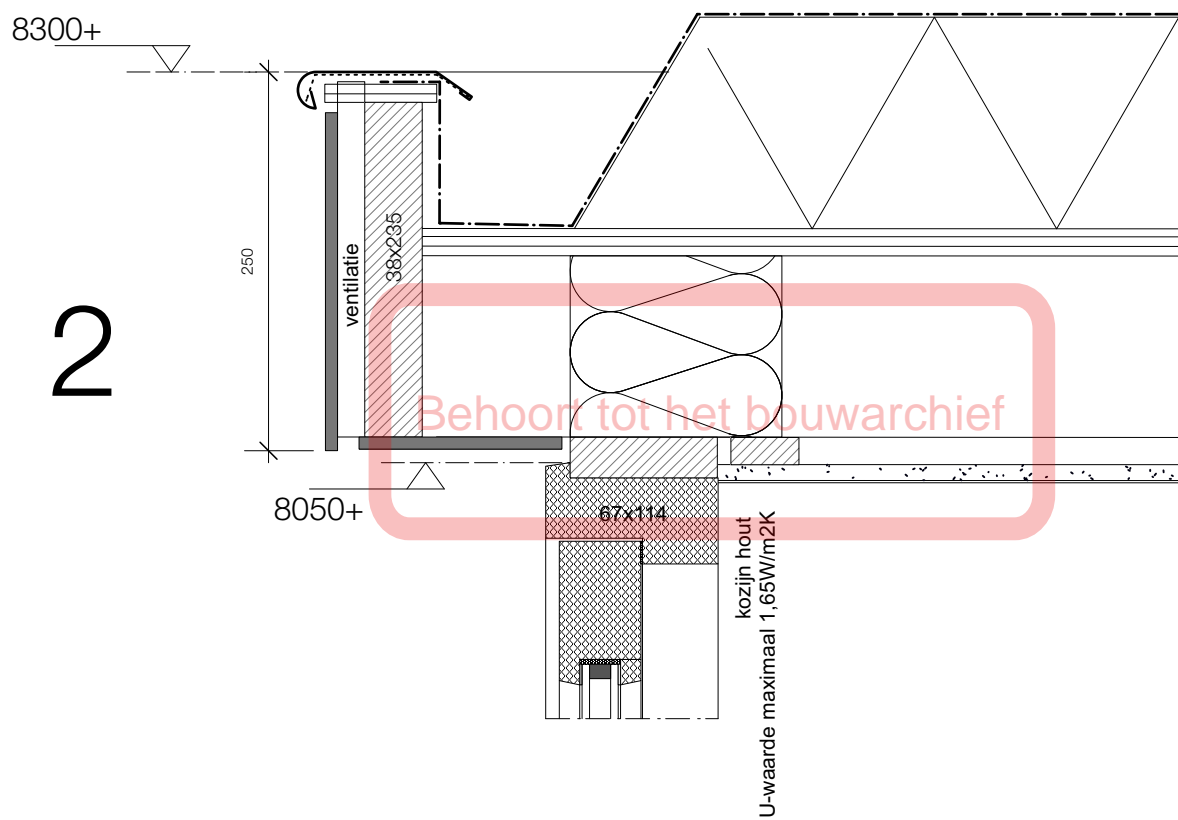
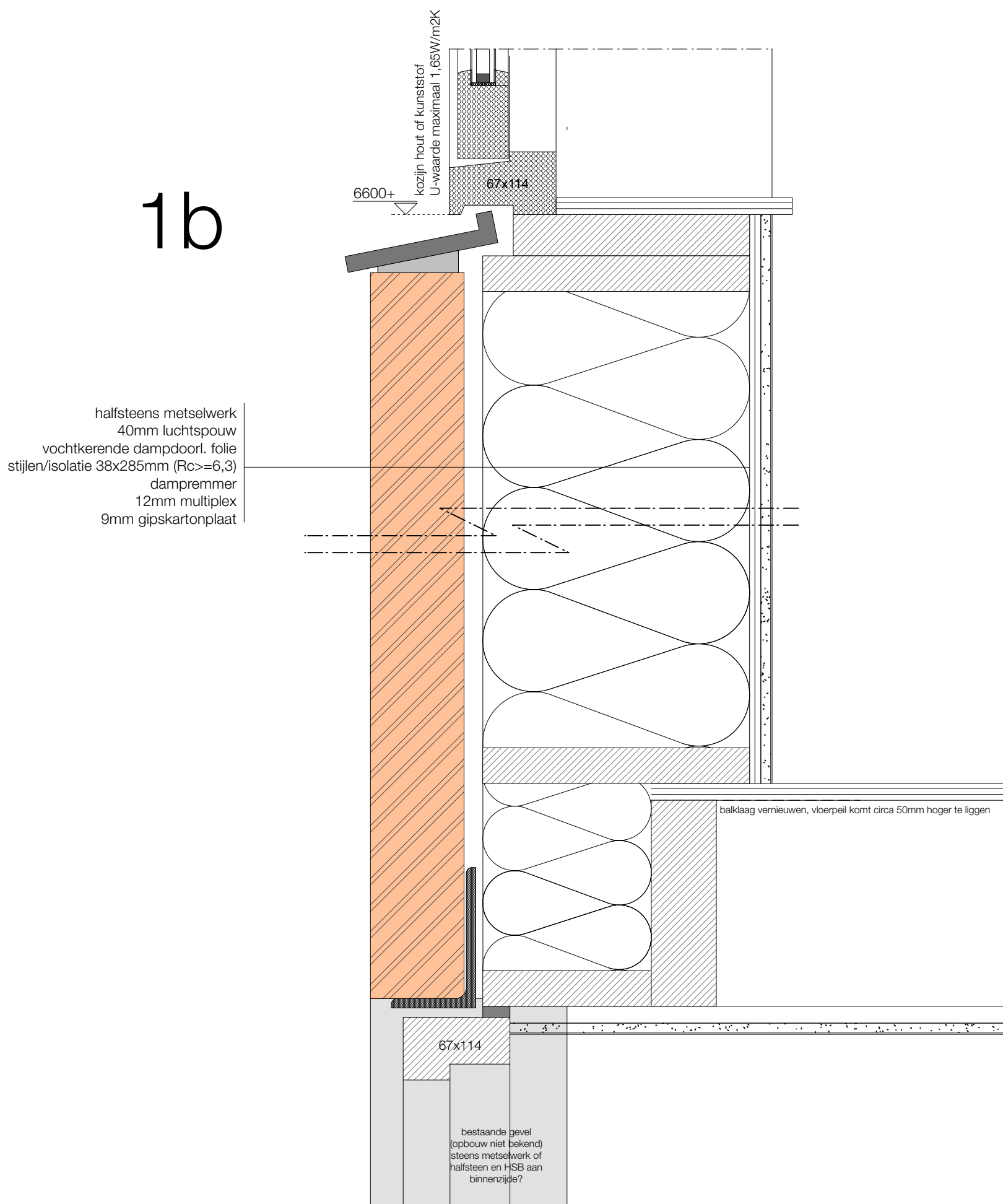
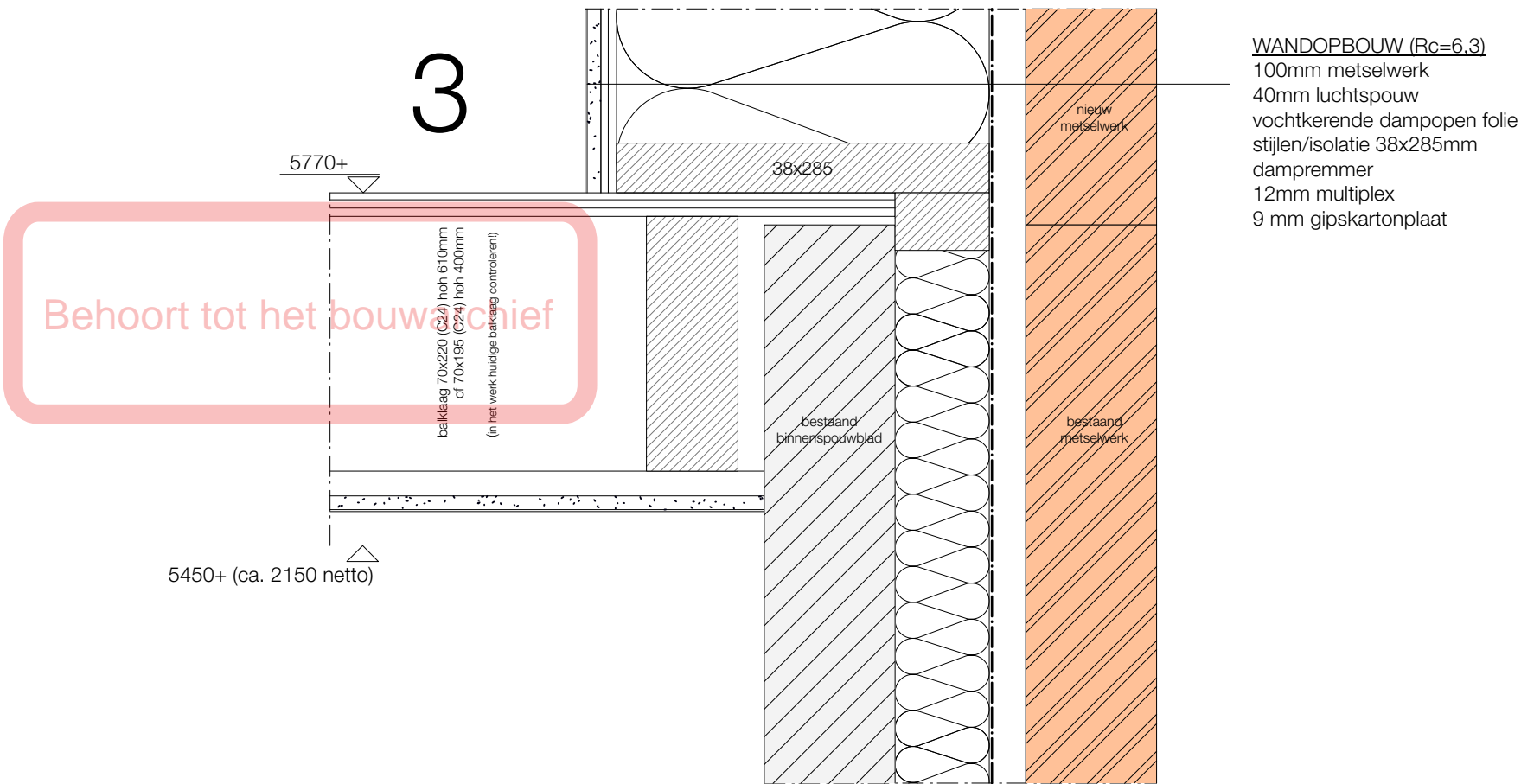


1a



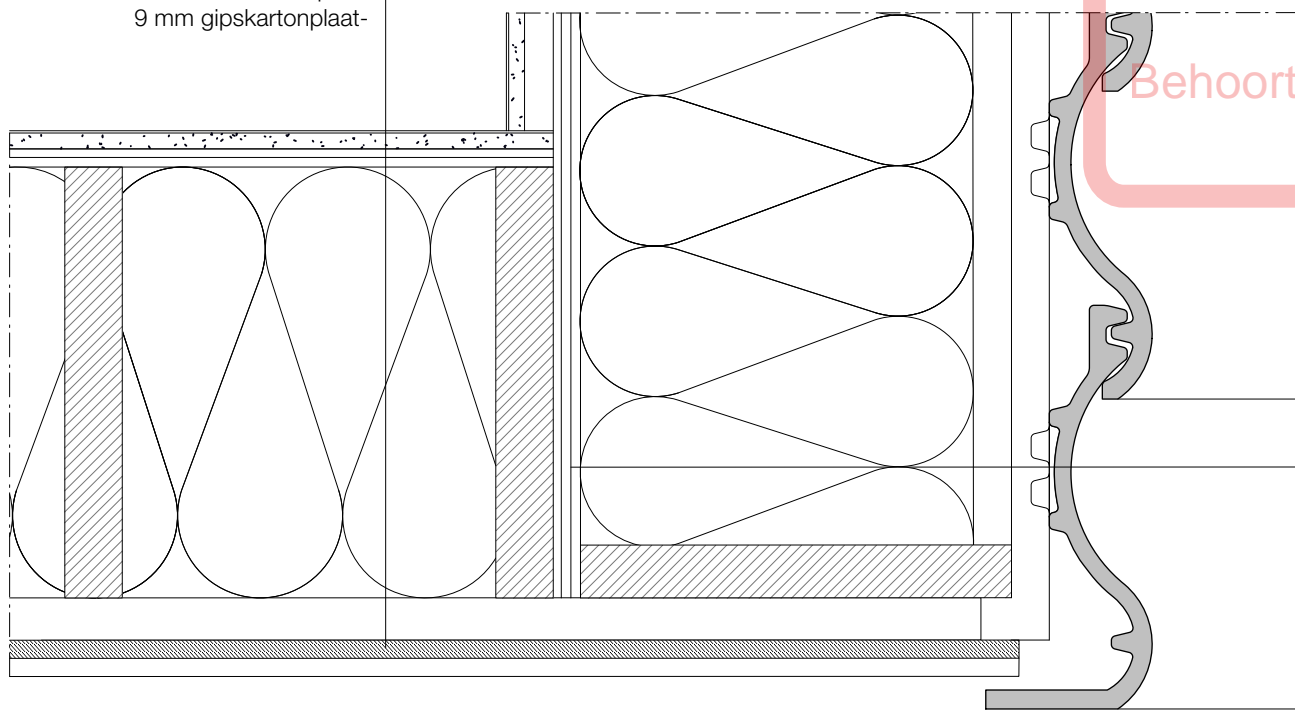
1b





zweeds rabat geïmpregneerd-  
regels/ventilatie-  
vochtkerende dampdoorl. folie-  
stijlen/isolatie 38x285mm (Rc-gevel  $\geq 6,3$ )-  
dampremmer-  
12mm multiplex-  
9 mm gipskartonplaat-

4



Behoort tot het bouwarchief

dakpannen  
panlatten  
ventilatielatten  
dampdoorlatende vochtkerende folie  
isolatie 260mm(Rc-dak  $\geq 6,3$ ) sporen 38x285mm  
dampremmer  
18mm dakbeschot  
regels/ventilatie  
12 mm gipskartonplaat