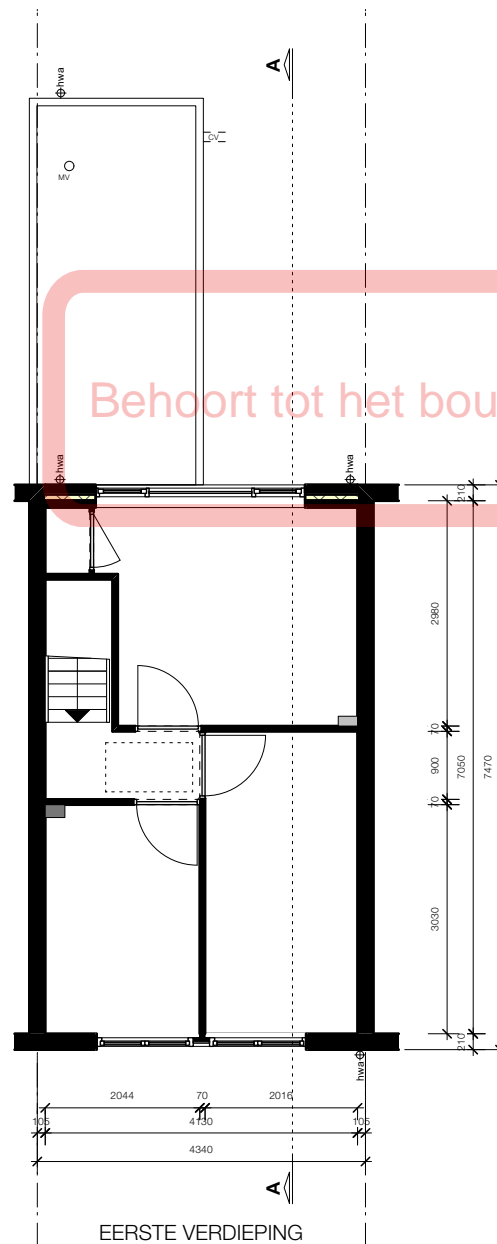
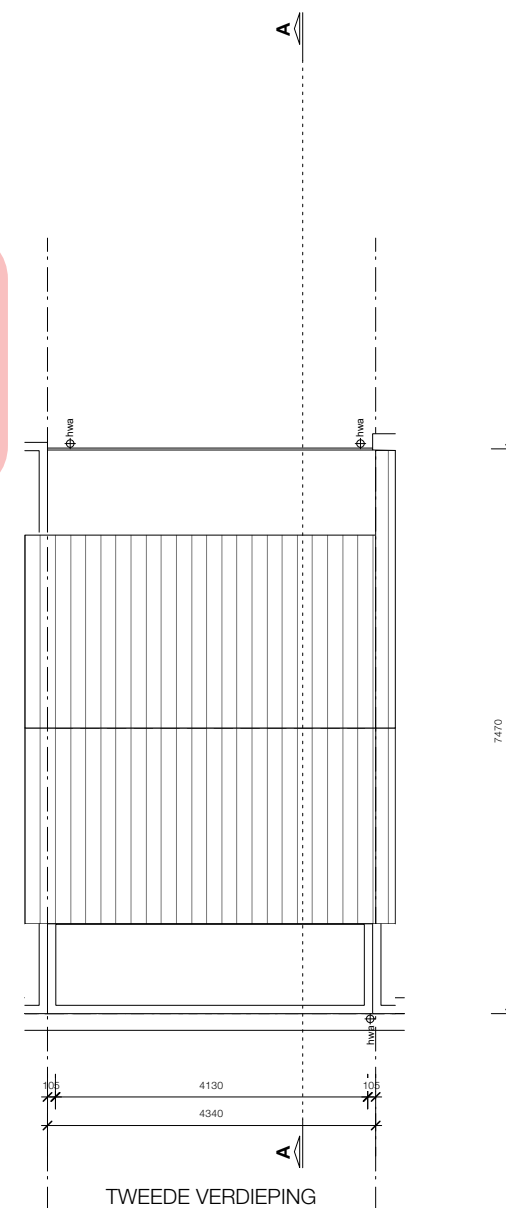


BEGANE GROND

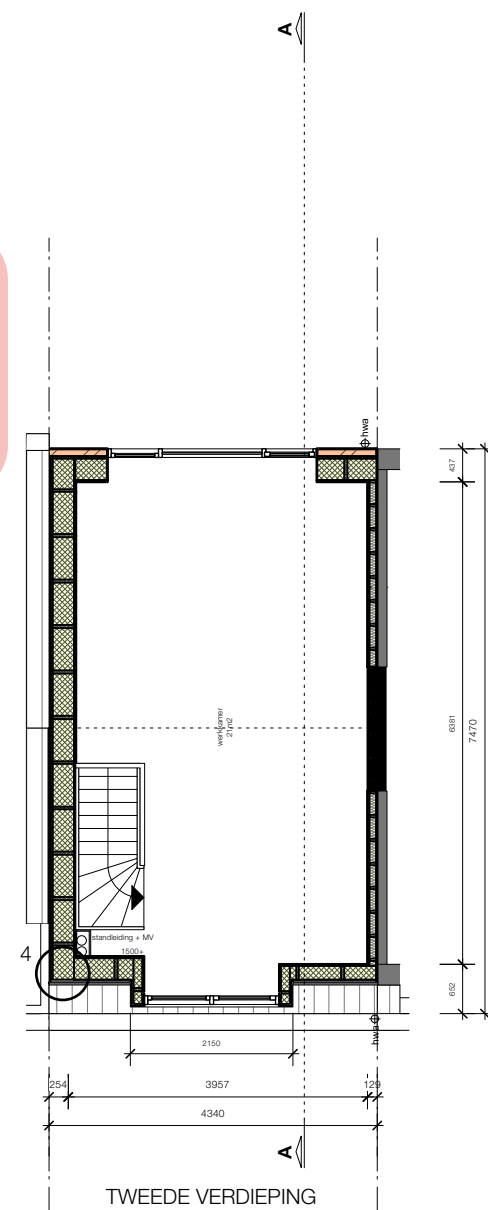
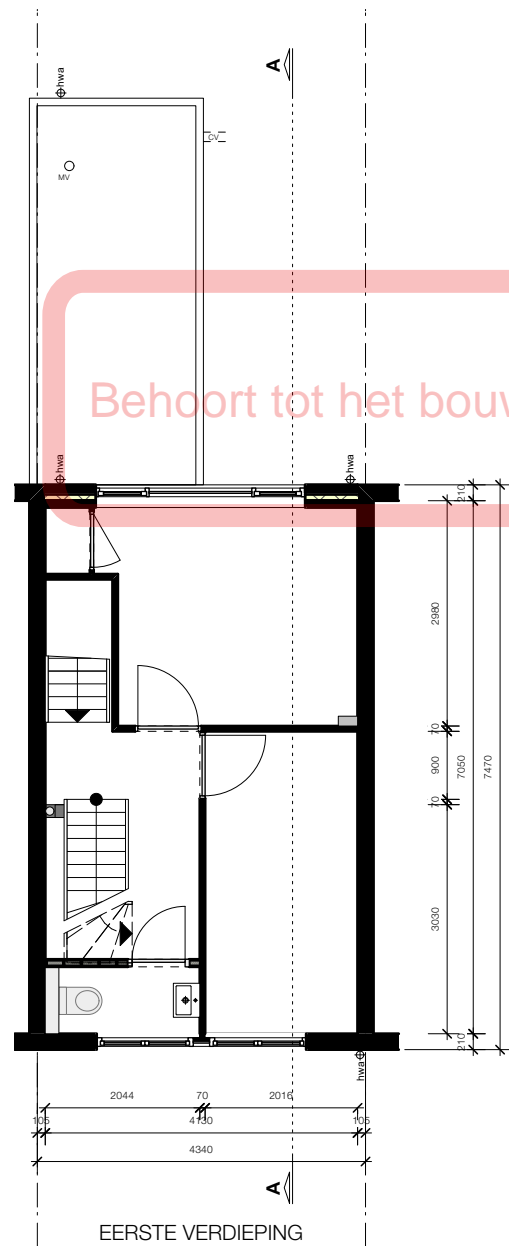
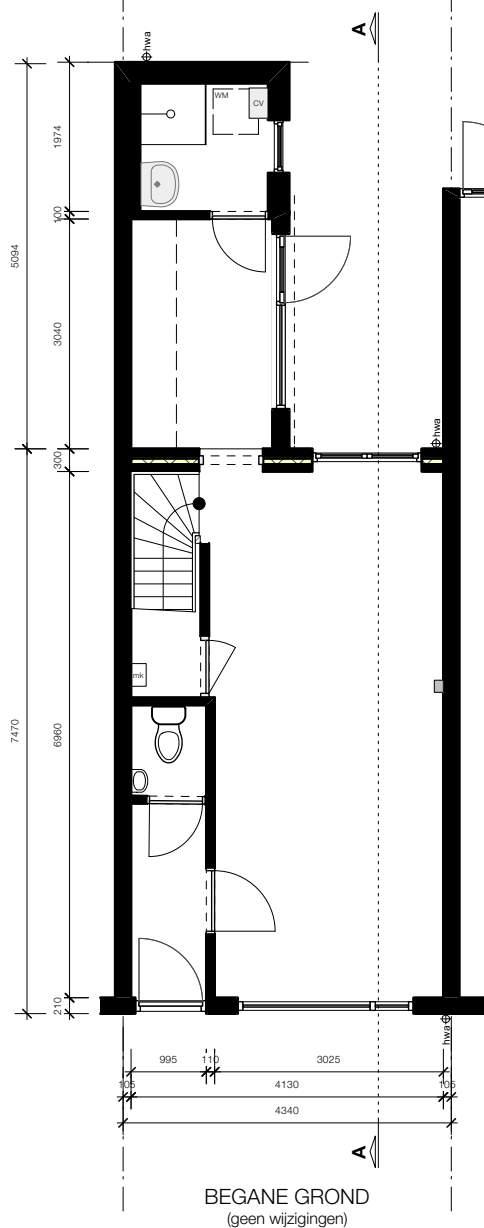


EERSTE VERDIEPING

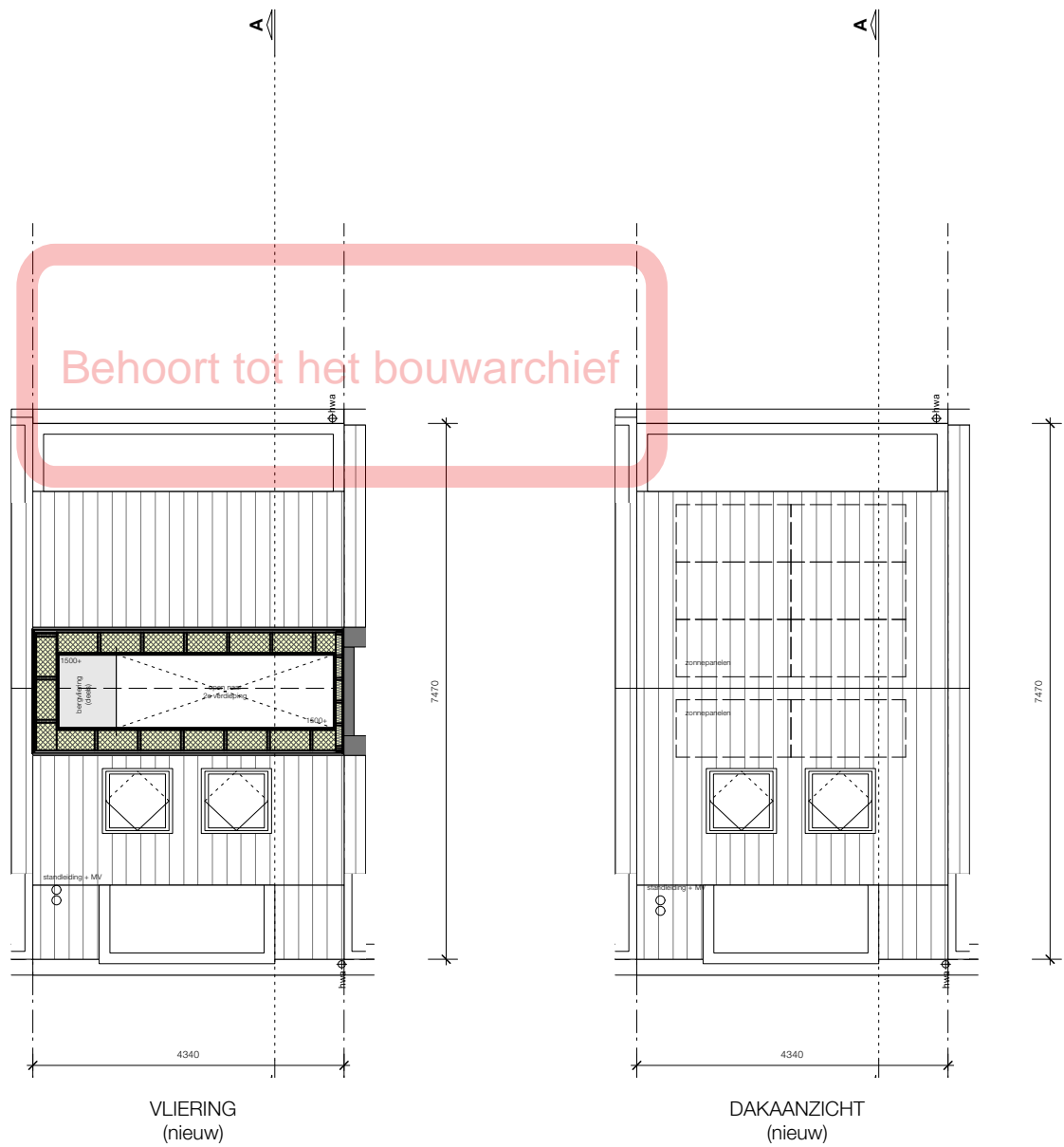


TWEDE VERDIEPING

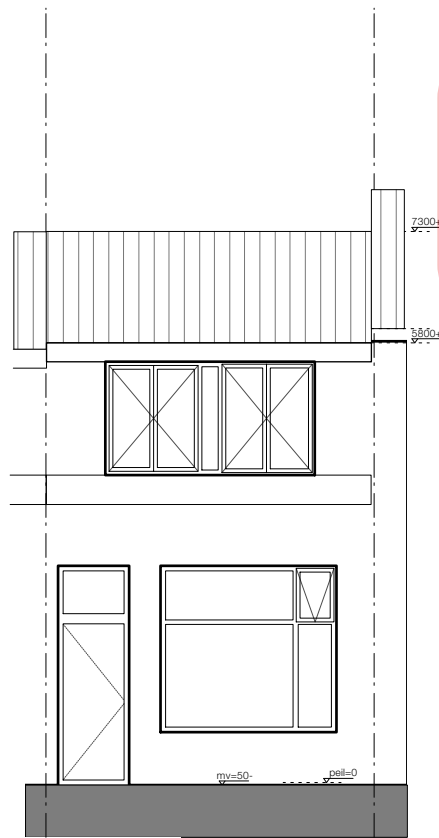
Behoort tot het bouwarchief



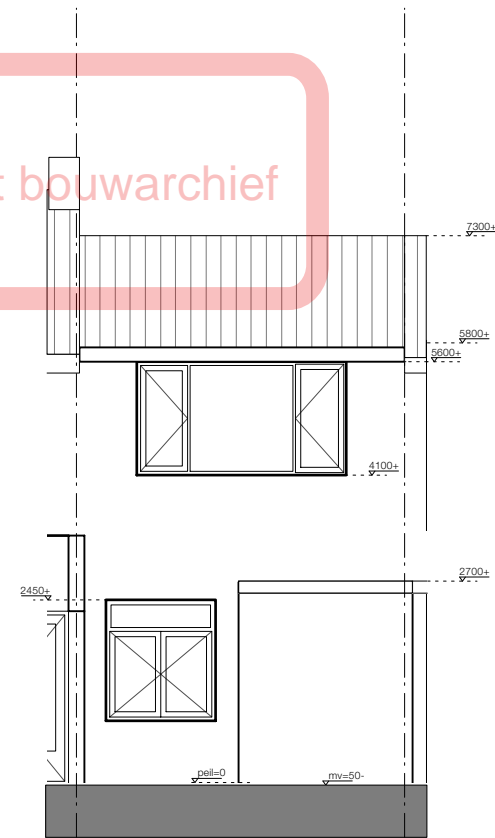
Behoort tot het bouwarchief



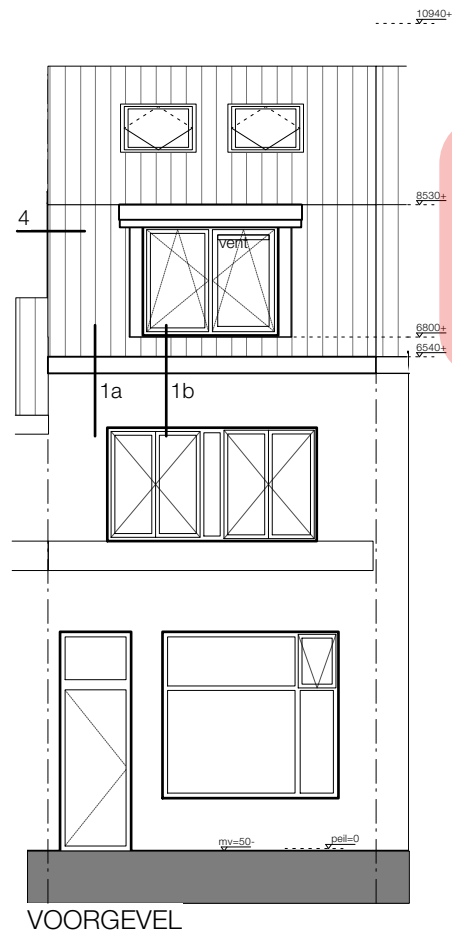
Behoort tot het bouwarchief



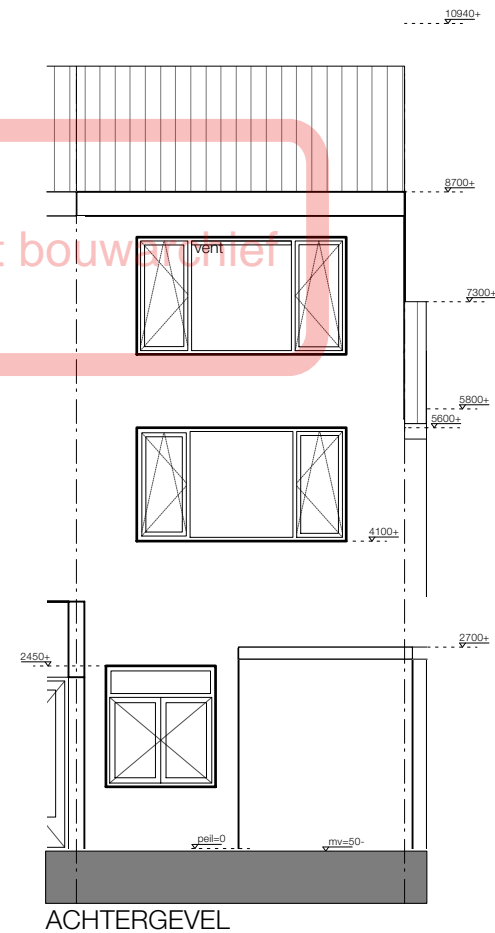
VOORGEVEL



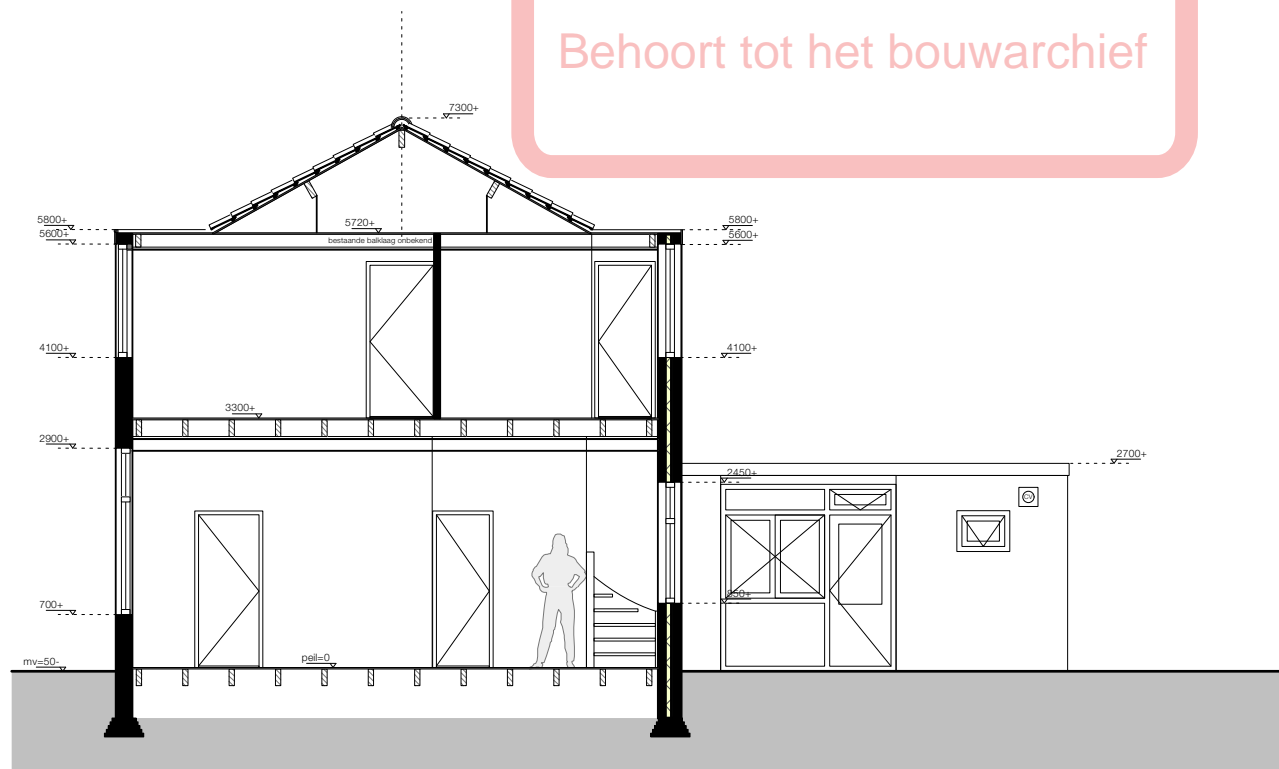
ACHTERGEVEL



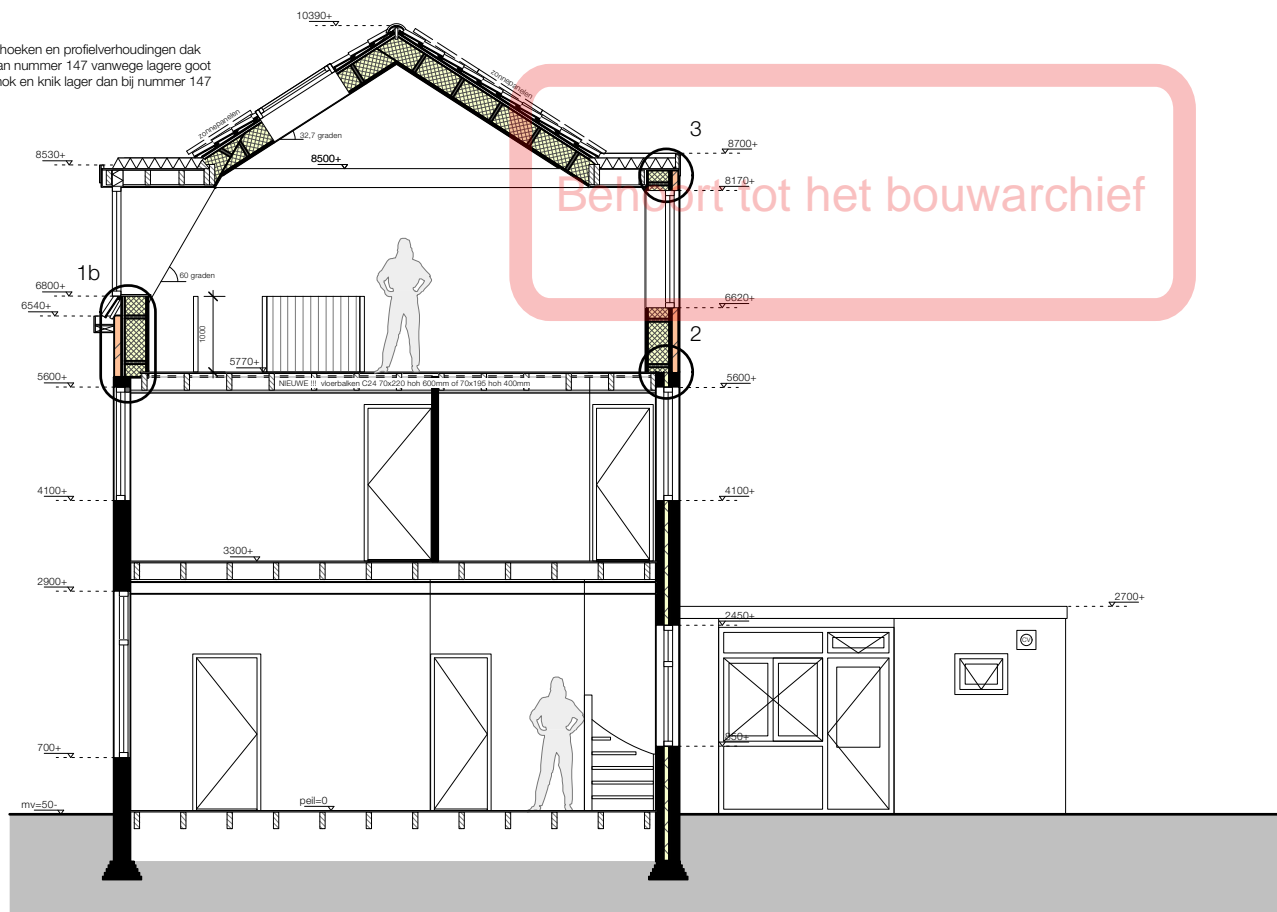
Behoort tot het bouwstufief

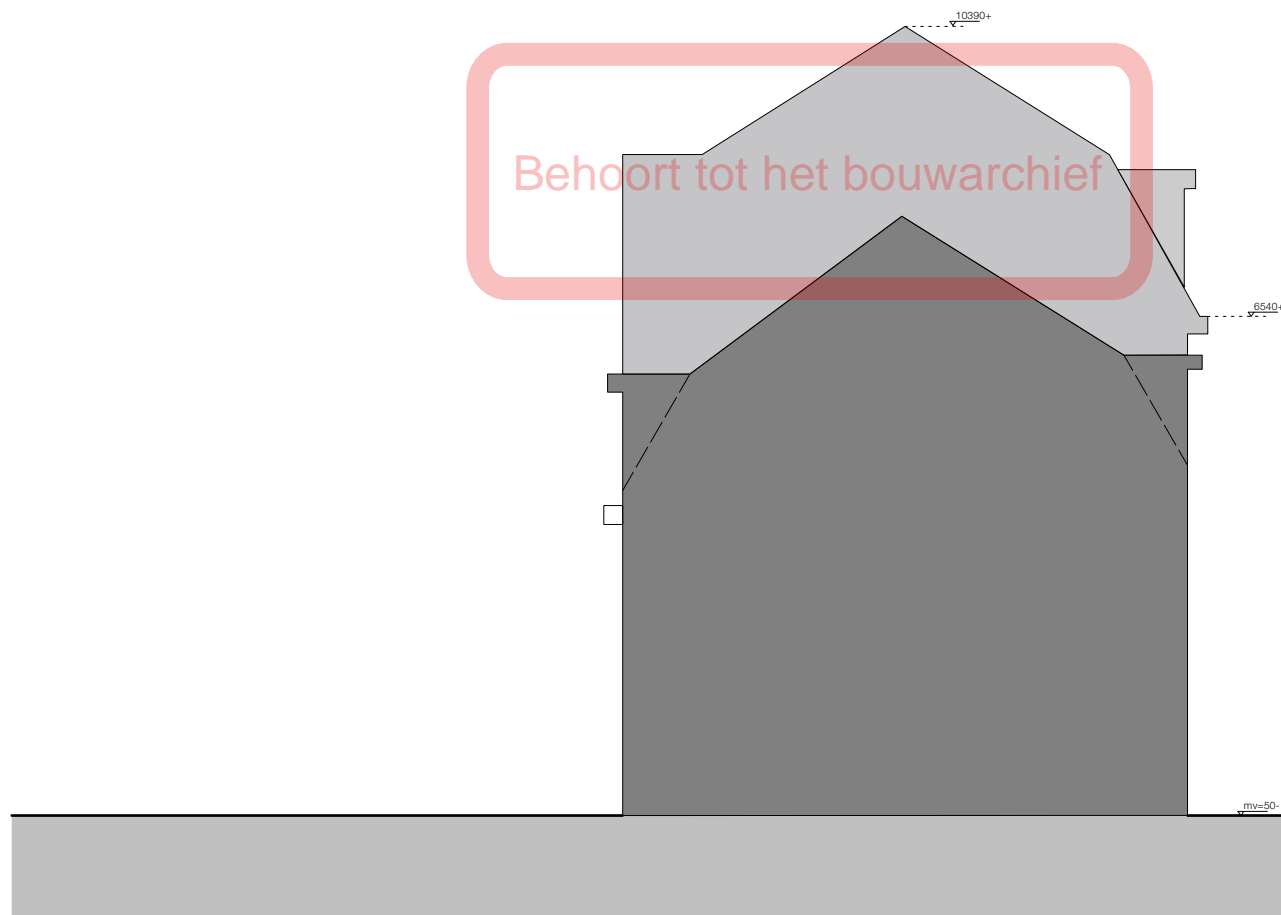


Behoort tot het bouwarchief

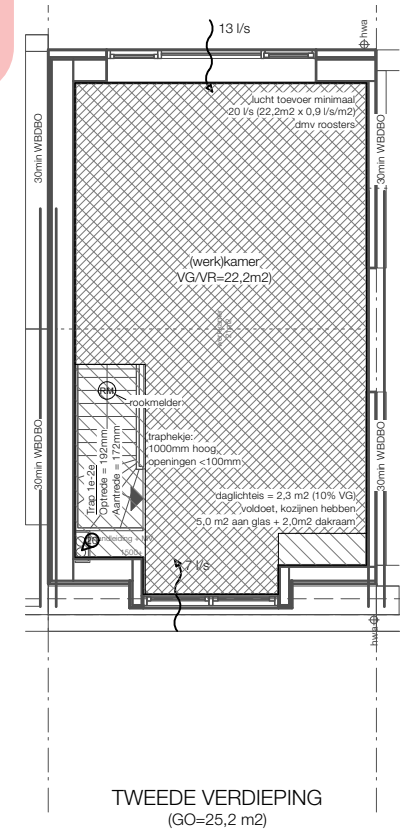
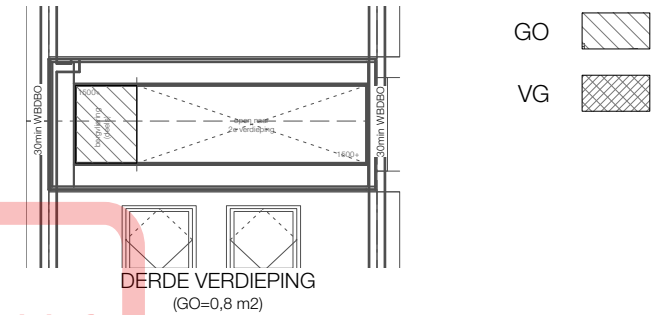
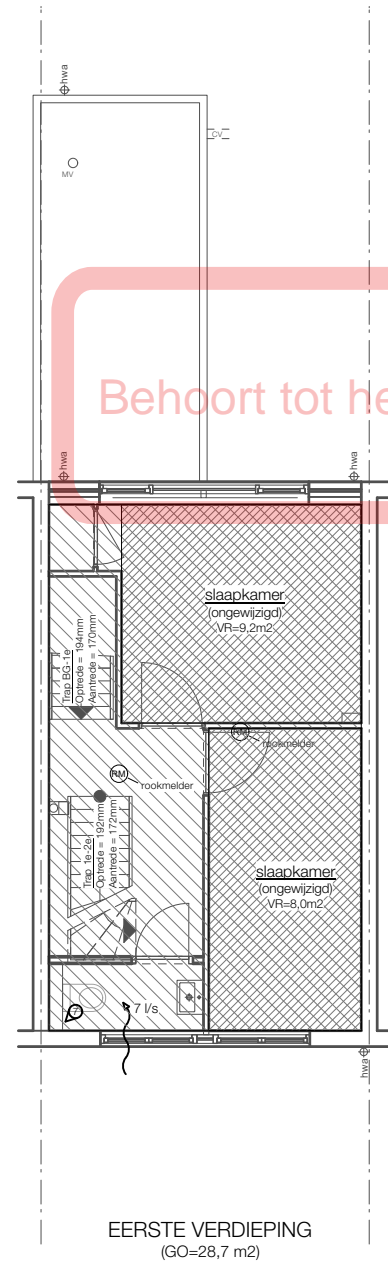
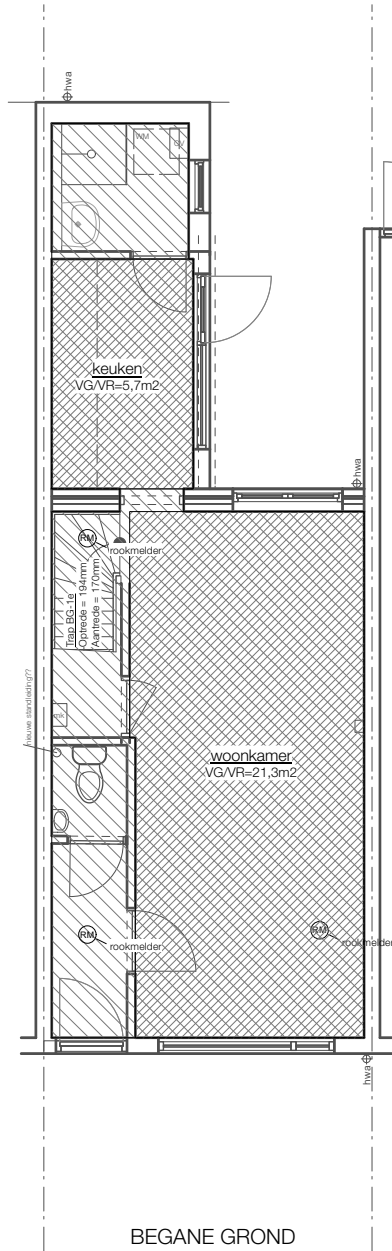


hellingshoeken en profielverhoudingen dak
gelijk aan nummer 147 vanwege lagere goot
liggen nok en knik lager dan bij nummer 147





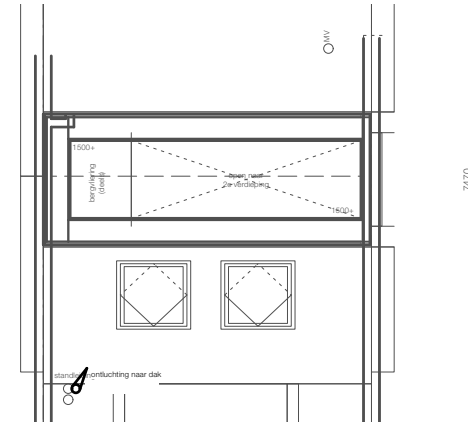
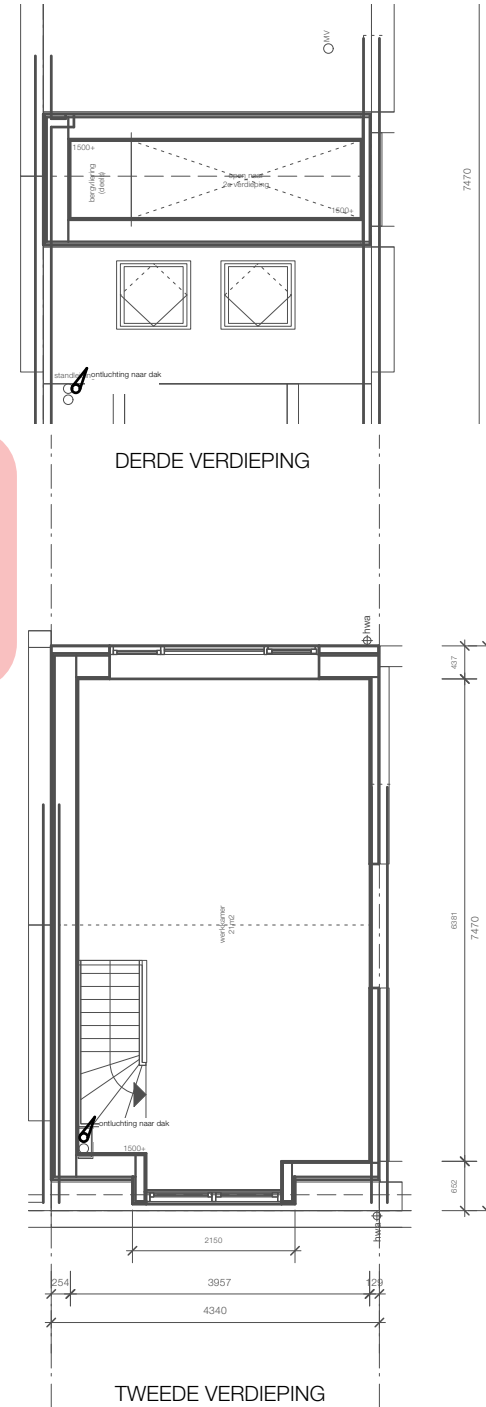
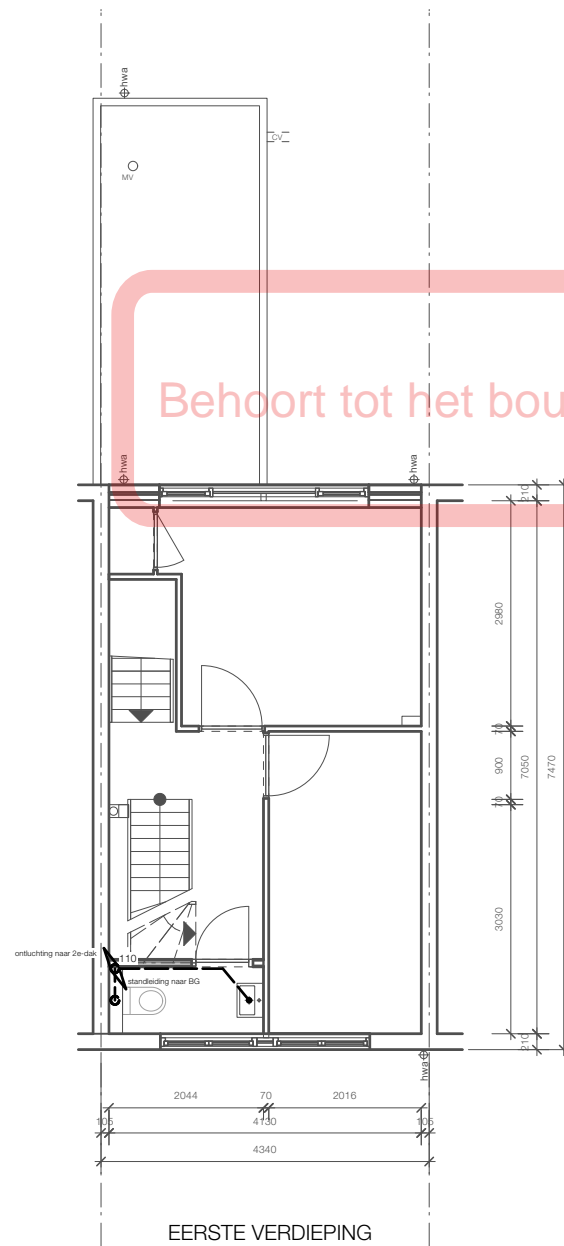
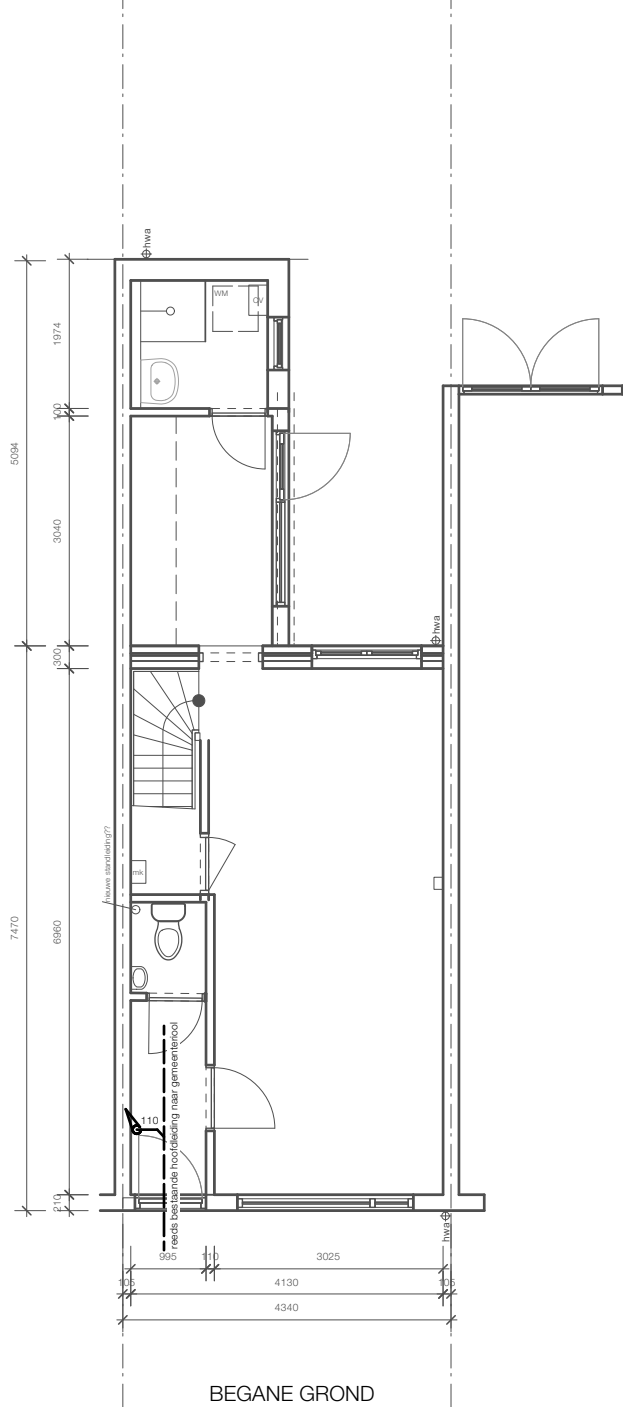
WONING IS EN BLIJFT IN BESTAANDE EN
NIEUWE TOESTAND ÉÉN BRANDCOMPARTIMENT



Behoort tot het bouwarchief

GO

VG



Behoort tot het bouwarchief